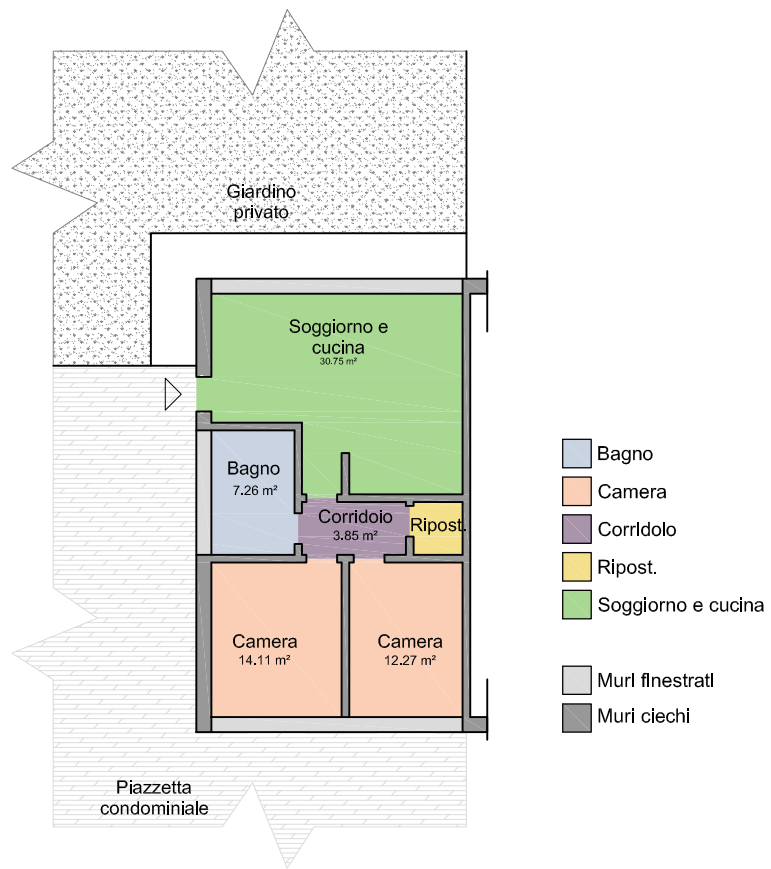
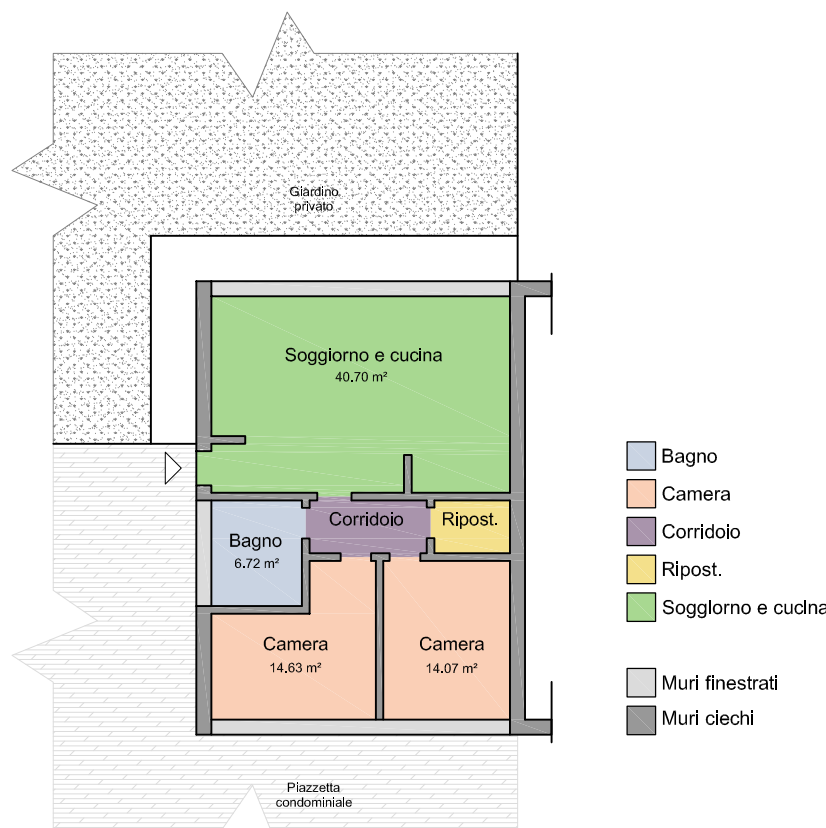


S - 2 CAMERE

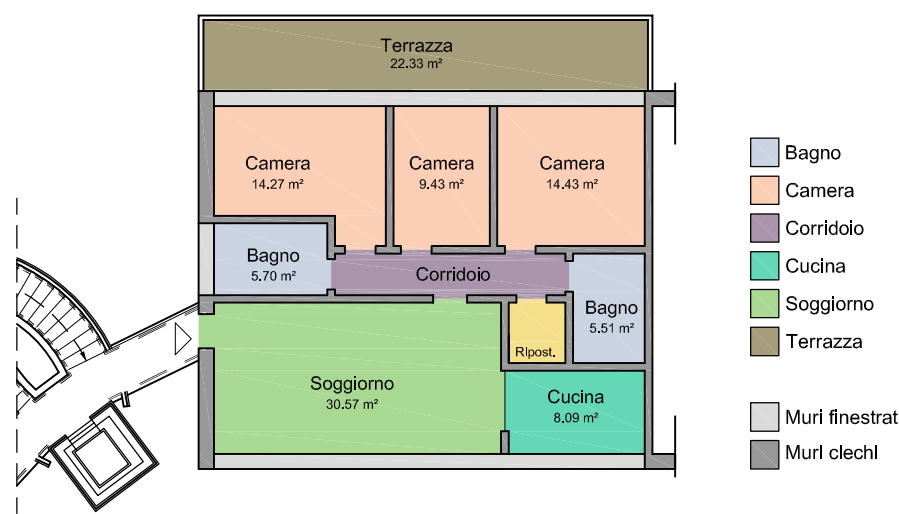


PIANO TERRA - 74mq circa



PIANO TERRA - 88 mq circa

M - 3 CAMERE

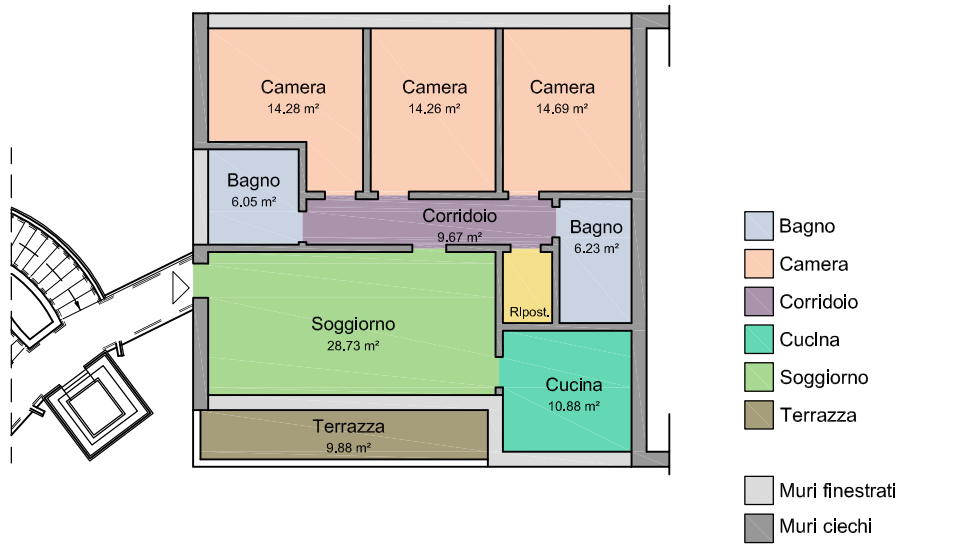


PIANO PRIMO E SECONDO - 105 mq circa

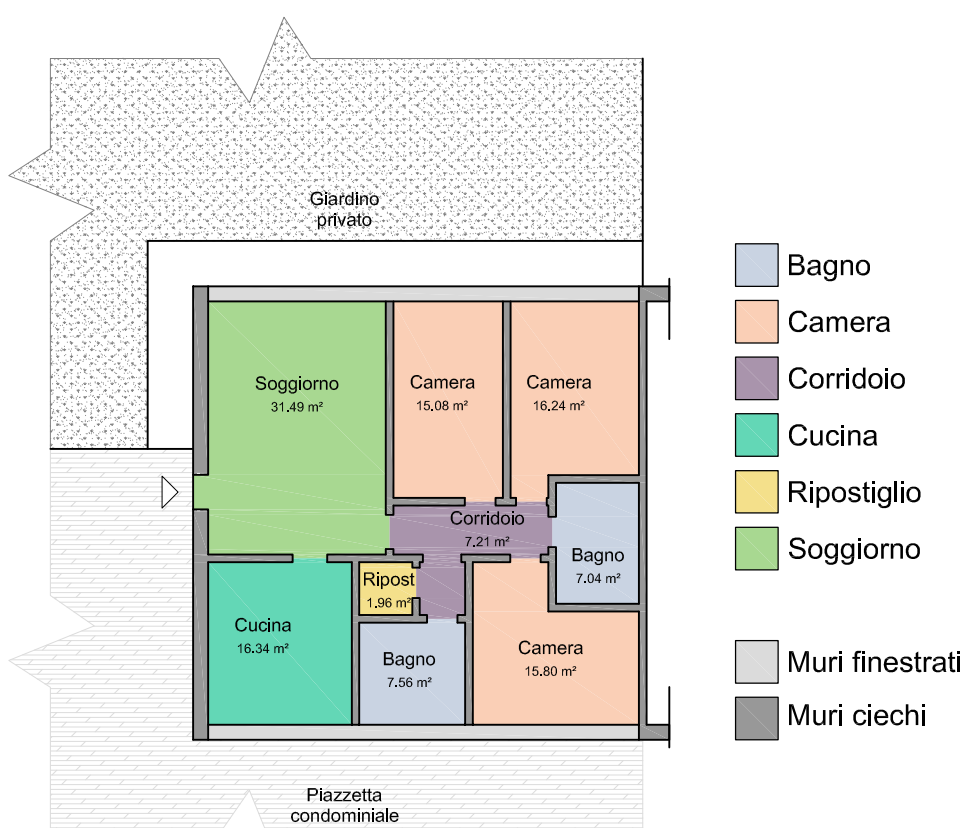


PIANO TERRA - 105 mq circa

L - 3 CAMERE

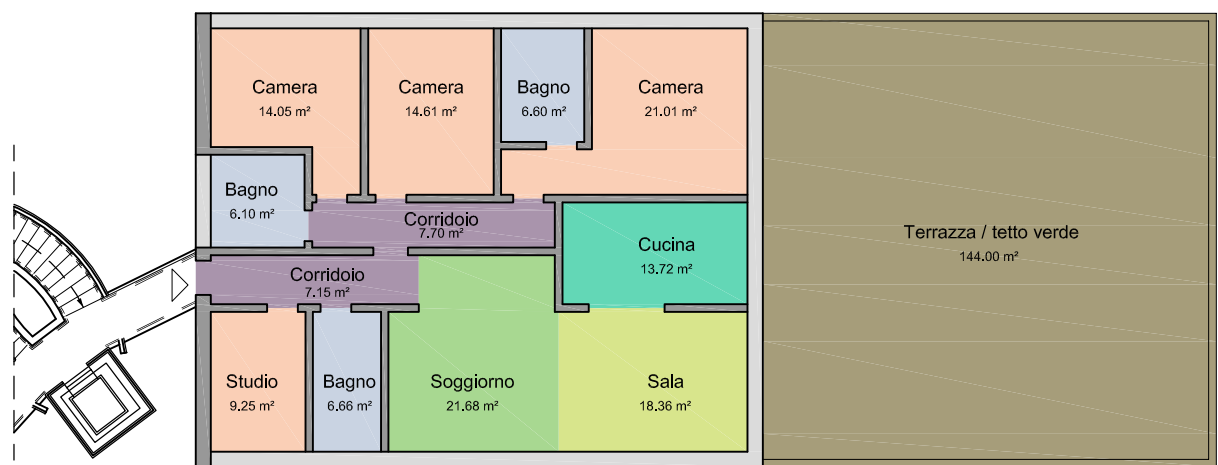


PIANO PRIMO E SECONDO - 127 mq circa



PIANO TERRA - 127 mq circa

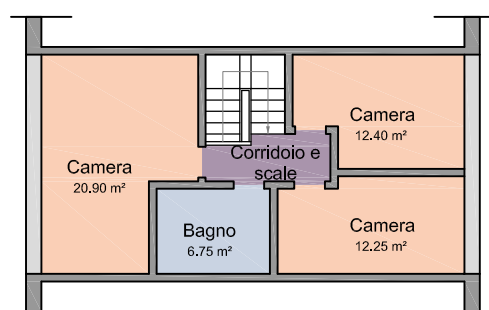
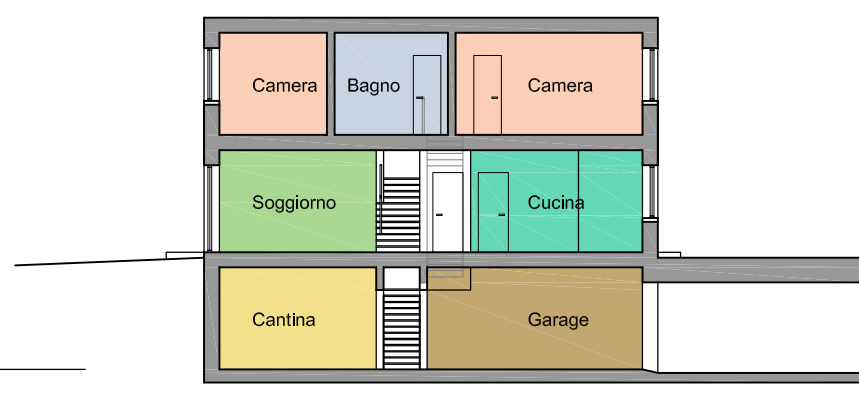
XL - 4 CAMERE



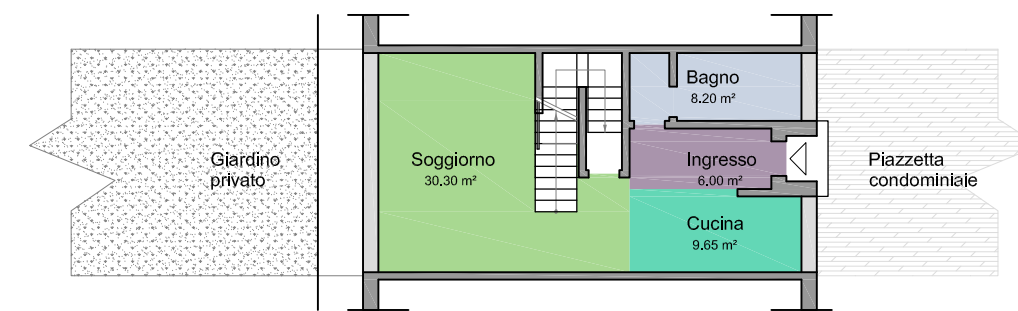
PIANO SECONDO - 160 mq circa



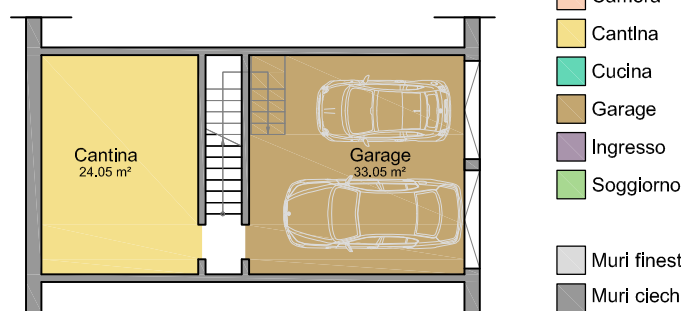
SCHIERA - 3 CAMERE



PIANO PRIMO

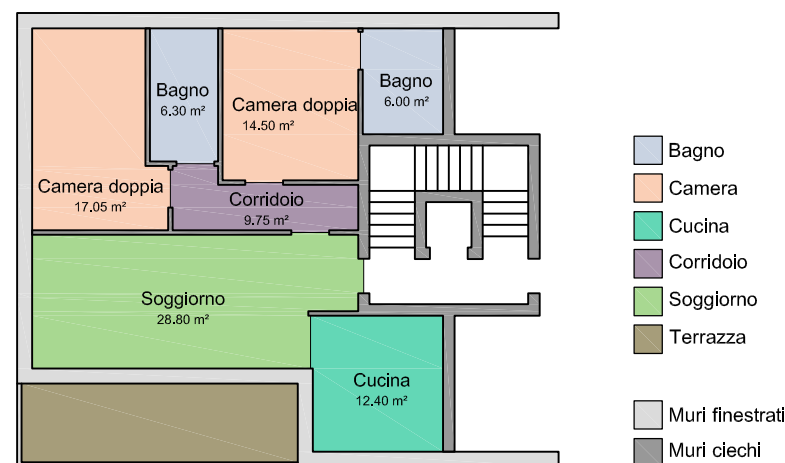


PIANO TERRA

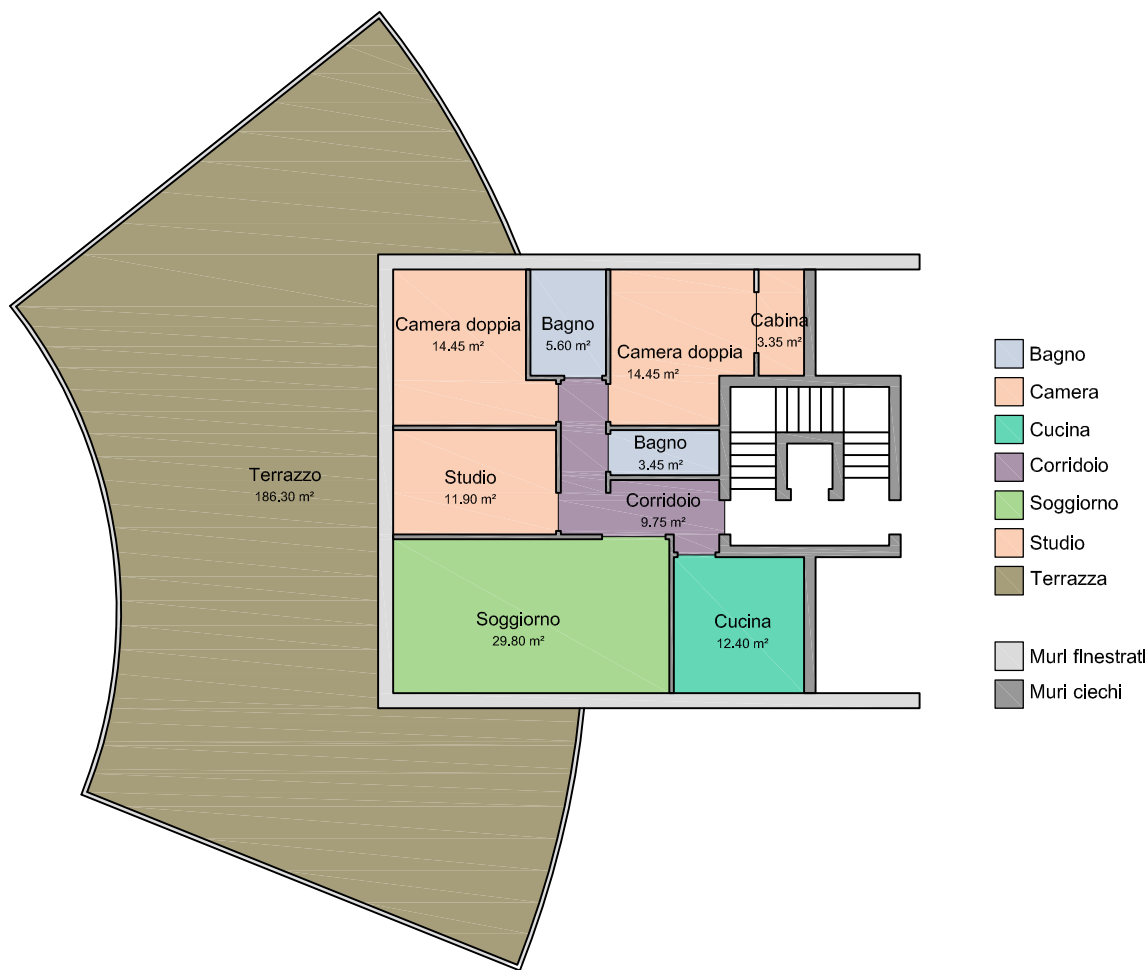


PIANO INTERRATO

CONDOMINI - APPARTAMENTI DI TESTA

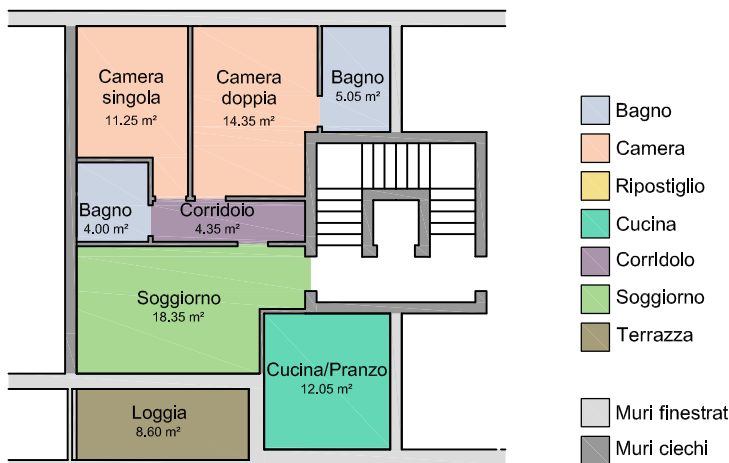


Esempio per i piani secondo e terzo - appartamento 2 camere -100 mq circa



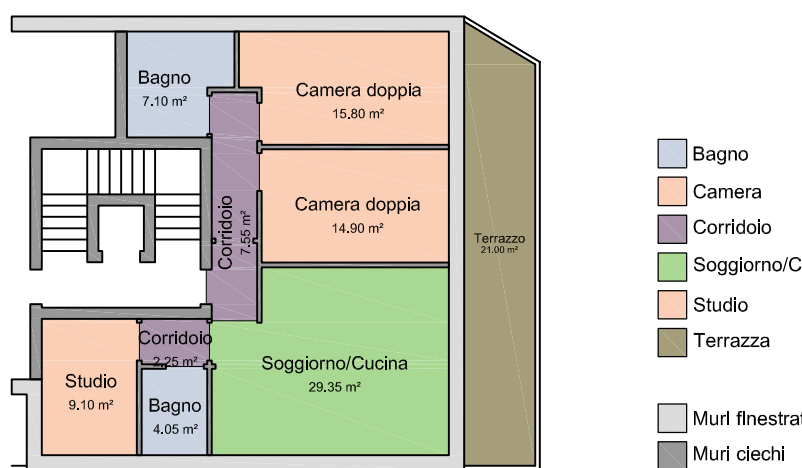
Esempio al piano primo con terrazzo verde - appartamento 3 camere -120 mq circa

CONDOMINI - APPARTAMENTI CENTRO BLOCCO



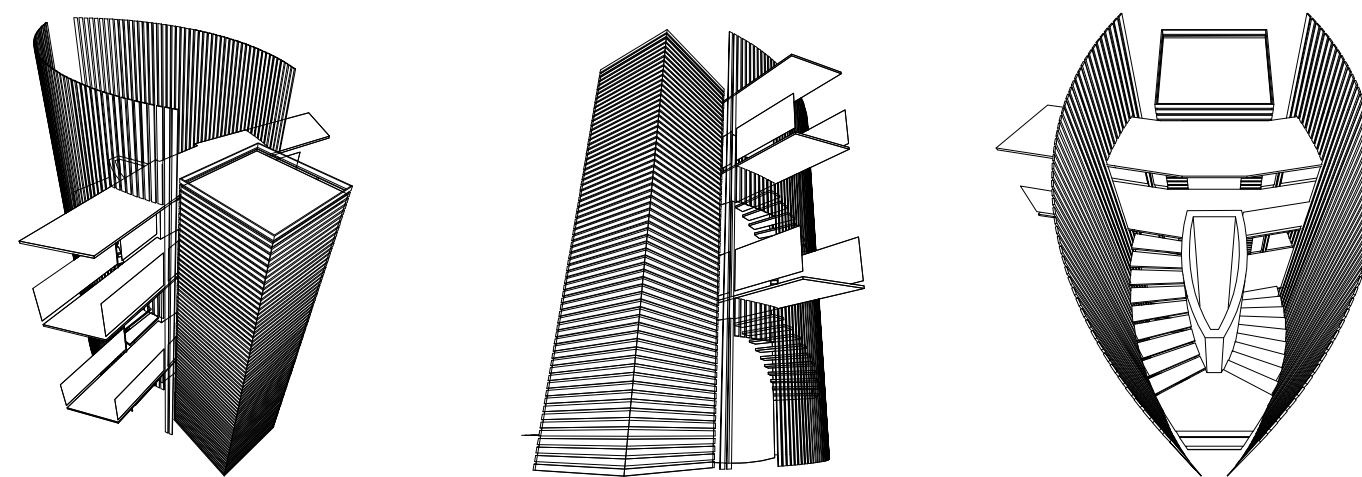
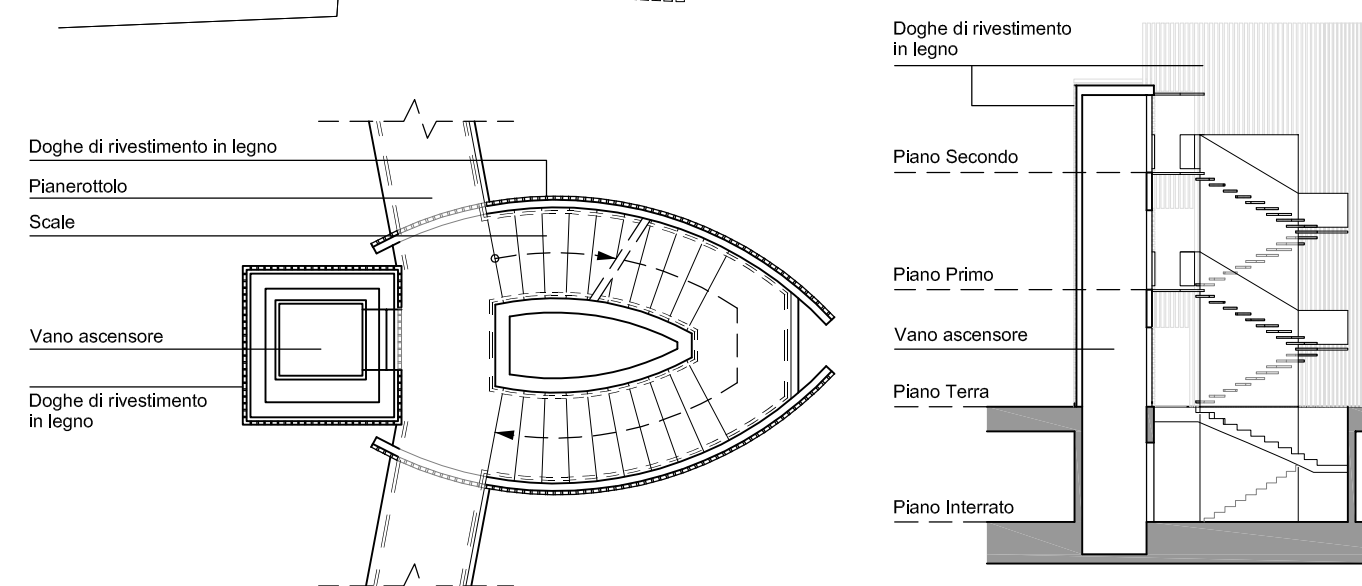
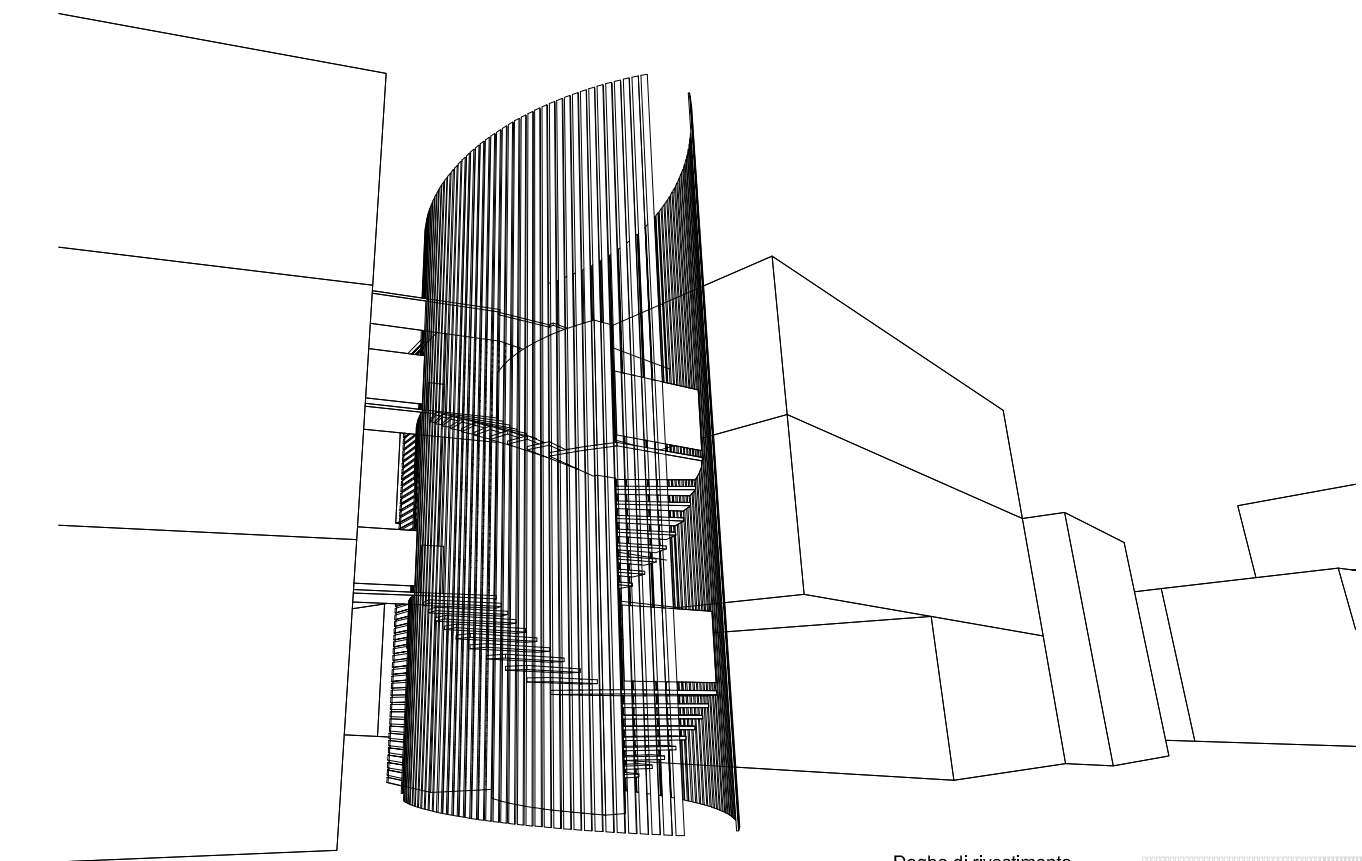
Esempio appartamento 2 camere - 82 mq circa

CONDOMINI - APPARTAMENTI DI CODA



Esempio su geometria secondo blocco - 105 mq circa

Scale Esterne - Lotti 1- 2 - 3 - 4 - 5



COMUNE DI FAENZA

Gruppo di progettazione
Progetto generale, coordinamento
arch. Marco Bartoli

Progetto urbanistico - edilizio
arch. Massimiliano Piccinini

Progetto idraulico, meccanico, acustico
Ing. Pietro Fumana

Progetto rete fognaria
arch. Franco Patrucco

Progetto impianti elettrici e speciali
Ing. Alfredo Ciani

Atti di, computi, pratiche amministrative
geom. Attilio Amadori

Contenuto dell'Elaborato
PROGETTO.EDILIZIO

ABACO.TIPOLOGIE

Scala
200
Data
14/12/2021
Codice Elaborato

ED4

IMMOBILIARE D.M.U. s.n.c., di DINO ZOLI & C.
viale Bologna, 286 - 47122 FORLÌ

PIANO URBANISTICO ATTUATIVO
DI ZONA RESIDENZIALE DENOMINATA
"AREA QUARANTA"
SCHEDA n° 160 , Tav. P3 P.R.G.1996. S.I.O. APPROVATO
CON ATTO DEL C.C. n° 1464 / 100 del 29.03.2007

